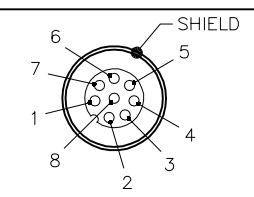

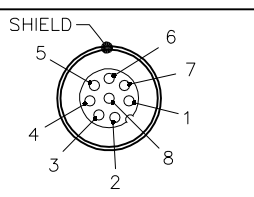
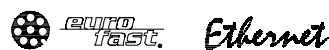
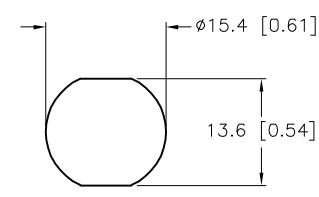
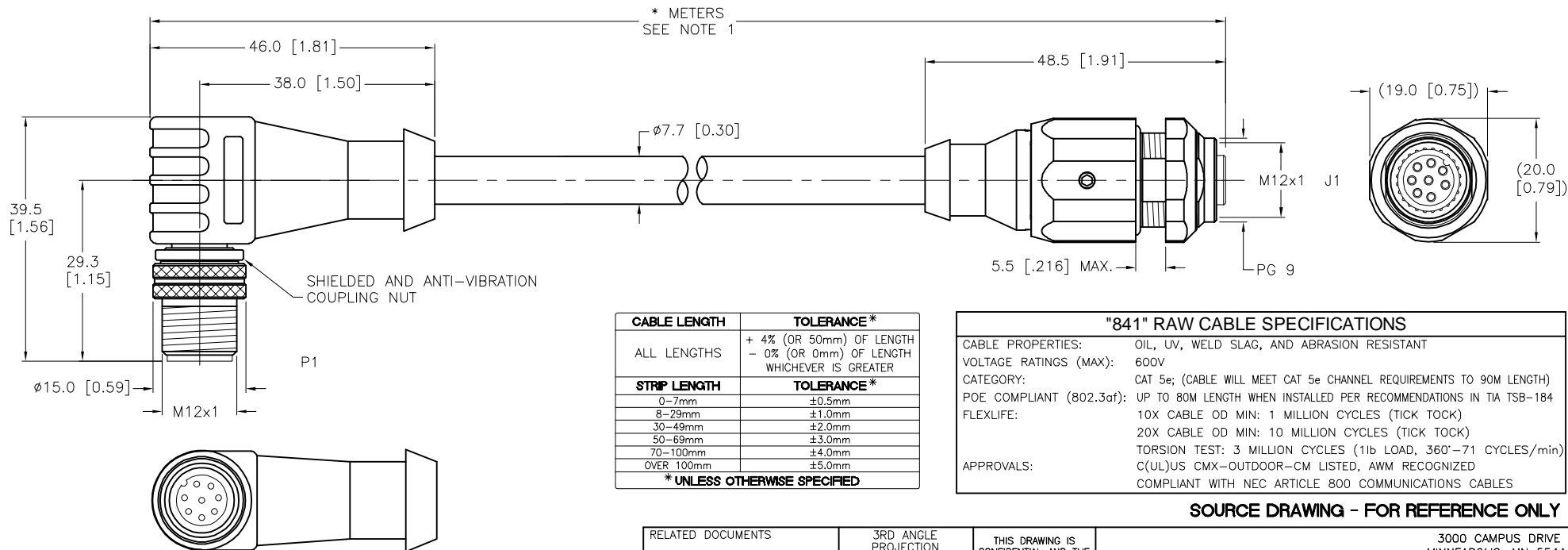


MALE END VIEW	FEMALE END VIEW	MOUNTING HOLE	SPECIFICATIONS																										
 <p>1 = WHITE/BLUE 2 = WHITE/BROWN 3 = BROWN 4 = ORANGE (-TX) 5 = WHITE/GREEN (+RX) 6 = WHITE/ORANGE (+TX) 7 = BLUE 8 = GREEN (-RX)</p> 	 <p>1 = WHITE/BLUE 2 = WHITE/BROWN 3 = BROWN 4 = ORANGE (-TX) 5 = WHITE/GREEN (+RX) 6 = WHITE/ORANGE (+TX) 7 = BLUE 8 = GREEN (-RX)</p> 		<table><tr><td>CONTACT CARRIER MATERIAL</td><td>NYLON OR TPU</td></tr><tr><td>MOLDED HEAD MATERIAL/COLOR</td><td>TPU/BLACK</td></tr><tr><td>CONTACT MATERIAL/PLATING</td><td>BRASS/GOLD</td></tr><tr><td>COUPLING NUT MATERIAL/PLATING</td><td>BRASS/NICKEL</td></tr><tr><td>RATED CURRENT [A]</td><td>2.0 A</td></tr><tr><td>RATED VOLTAGE [V]</td><td>60 V</td></tr><tr><td>OUTER CABLE JACKET MATERIAL/COLOR</td><td>TPE/TEAL</td></tr><tr><td>CONDUCTOR INSULATION MATERIAL</td><td>HDPE</td></tr><tr><td>NUMBER OF CONDUCTORS [AWG]</td><td>4UTP×24 AWG, STRANDED</td></tr><tr><td>SHIELD</td><td>ALUM.-POLYESTER FOIL, TINNED-COPPER BRAIDED</td></tr><tr><td>TEMPERATURE RANGE</td><td>-40°C to +80°C (-40°F to +176°F)</td></tr><tr><td>PROTECTION CLASS</td><td>MEETS IEC IP67</td></tr><tr><td>MAX. PANEL THICKNESS</td><td>3.0mm [0.12"] (P1), 5.5mm [0.216"] (J1)</td></tr></table>	CONTACT CARRIER MATERIAL	NYLON OR TPU	MOLDED HEAD MATERIAL/COLOR	TPU/BLACK	CONTACT MATERIAL/PLATING	BRASS/GOLD	COUPLING NUT MATERIAL/PLATING	BRASS/NICKEL	RATED CURRENT [A]	2.0 A	RATED VOLTAGE [V]	60 V	OUTER CABLE JACKET MATERIAL/COLOR	TPE/TEAL	CONDUCTOR INSULATION MATERIAL	HDPE	NUMBER OF CONDUCTORS [AWG]	4UTP×24 AWG, STRANDED	SHIELD	ALUM.-POLYESTER FOIL, TINNED-COPPER BRAIDED	TEMPERATURE RANGE	-40°C to +80°C (-40°F to +176°F)	PROTECTION CLASS	MEETS IEC IP67	MAX. PANEL THICKNESS	3.0mm [0.12"] (P1), 5.5mm [0.216"] (J1)
CONTACT CARRIER MATERIAL	NYLON OR TPU																												
MOLDED HEAD MATERIAL/COLOR	TPU/BLACK																												
CONTACT MATERIAL/PLATING	BRASS/GOLD																												
COUPLING NUT MATERIAL/PLATING	BRASS/NICKEL																												
RATED CURRENT [A]	2.0 A																												
RATED VOLTAGE [V]	60 V																												
OUTER CABLE JACKET MATERIAL/COLOR	TPE/TEAL																												
CONDUCTOR INSULATION MATERIAL	HDPE																												
NUMBER OF CONDUCTORS [AWG]	4UTP×24 AWG, STRANDED																												
SHIELD	ALUM.-POLYESTER FOIL, TINNED-COPPER BRAIDED																												
TEMPERATURE RANGE	-40°C to +80°C (-40°F to +176°F)																												
PROTECTION CLASS	MEETS IEC IP67																												
MAX. PANEL THICKNESS	3.0mm [0.12"] (P1), 5.5mm [0.216"] (J1)																												



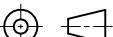

CABLE LENGTH	TOLERANCE *
ALL LENGTHS	+ 4% (OR 50mm) OF LENGTH - 0% (OR 0mm) OF LENGTH WHICHEVER IS GREATER
STRIP LENGTH	TOLERANCE *
0-7mm	±0.5mm
8-29mm	±1.0mm
30-49mm	±2.0mm
50-69mm	±3.0mm
70-100mm	±4.0mm
OVER 100mm	±5.0mm
* UNLESS OTHERWISE SPECIFIED	

"841" RAW CABLE SPECIFICATIONS	
CABLE PROPERTIES:	OIL, UV, WELD SLAG, AND ABRASION RESISTANT
VOLTAGE RATINGS (MAX):	600V
CATEGORY:	CAT 5e; (CABLE WILL MEET CAT 5e CHANNEL REQUIREMENTS TO 90M LENGTH)
POE COMPLIANT (802.3af):	UP TO 80M LENGTH WHEN INSTALLED PER RECOMMENDATIONS IN TIA TSB-184
FLEX LIFE:	10X CABLE OD MIN: 1 MILLION CYCLES (TICK TOCK) 20X CABLE OD MIN: 10 MILLION CYCLES (TICK TOCK) TORSION TEST: 3 MILLION CYCLES (1lb LOAD, 360°-71 CYCLES/min)
APPROVALS:	C(UL)US CMX-OUTDOOR-CM LISTED, AWM RECOGNIZED COMPLIANT WITH NEC ARTICLE 800 COMMUNICATIONS CABLES

NOTES:

- "*" INDICATES CABLE LENGTH IN METERS. CONTACT TURCK TO ORDER SPECIFIC LENGTHS.

SOURCE DRAWING - FOR REFERENCE ONLY

RELATED DOCUMENTS 1. 2. 3. 4.	3RD ANGLE PROJECTION			THIS DRAWING IS CONFIDENTIAL AND THE PROPERTY OF TURCK INC. USE OF THIS DOCUMENT WITHOUT WRITTEN PERMISSION IS PROHIBITED.			3000 CAMPUS DRIVE MINNEAPOLIS, MN 55441 1-800-544-7769 (763) 553-7300 (763) 553-0708 fax www.turck.us	
MATERIAL	ALL DIMENSIONS DISPLAYED ON THIS DRAWING ARE FOR REFERENCE ONLY	DRFT	RDS	DATE	05/12/14	DESCRIPTION WSS FKSDE 841-*M		
APVD		T.S.	SCALE	1=1.0				
FINISH		CONTACT TURCK FOR MORE INFORMATION	UNIT OF MEASUREMENT MILLIMETER [INCH]			IDENTIFICATION NO.		REV C
		DO NOT SCALE THIS DRAWING			FILE: 777033360		SHEET 1 OF 1	

C	UPDATED P1	AS	06/11/25	500000011277
REV	DESCRIPTION	BY	DATE	ECO NO.